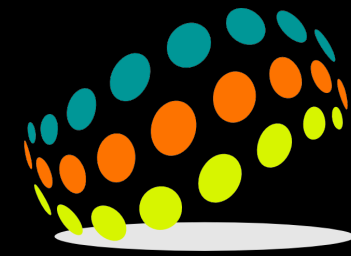


RAMAC™

Solution Overview



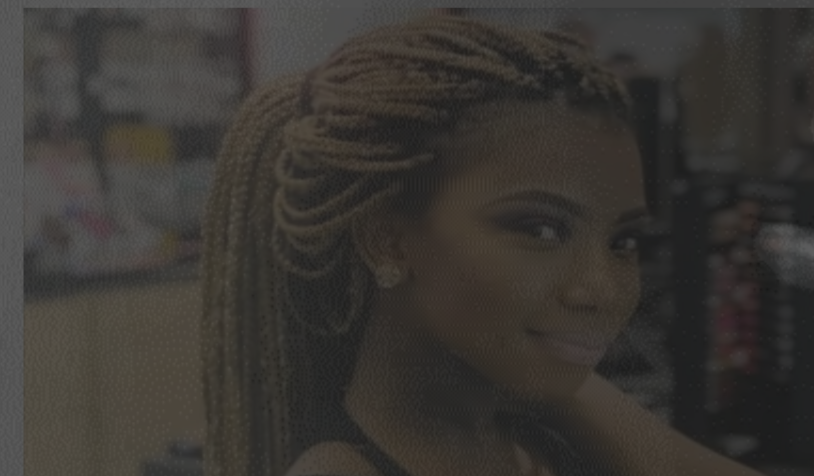
G-Matrix Systems

Integrated System Design

According to a statement from Ramaphosa in June 2021, 51 percent of South African women have experienced violence at the hands of someone with whom they are in a relationship.

Pregnant South African woman found dead hanging in tree

By Jackie Salo June 11, 2020 | 11:59am



Body of woman found dumped under tree in Dobsonville

news24 Alex Mitchley



Mossel Bay family seeks justice after daughter hacked to death

11 June 2020, 9:22 PM | SABC | @SABCNews



“Every day three children and eight women are murdered, and 250 women are raped. It is time to stand up and say enough. Enough excuses, enough inaction and enough lip service.”

#GenderBasedViolence #StopKillingWomen



G-Matrix Systems

Integrated System Design

G-Matrix Systems addresses the modern need for monitoring through a range of bespoke IOT communications solutions, from cold chain monitoring, to security and entry control, tracking, fluid measurement and more.

G-Matrix Systems is a **Full IoT Turn-key** solution provider and is completely network Agnostic

CONTACT US

G-Matrix Systems (Pty) Ltd

Building 7 Stanford Office Park Highveld Techno Park
Centurion, Pretoria, 0157

info@g-matrixsystems.com

www.g-matrixsystems.com

TEL: +27 87 803 9987

Cell: +27 72 594 8408

Our Core Business

RESEARCH & DEVELOPMENT

Internal R&D for product enhancement ensuring G-Matrix is always ahead of the curve with future Technologies.



RAPID PROTOTYPING

The G-Matrix Systems “Heart” is an all-encompassing device which allows for multiple sensors to be connected allowing rapid prototyping. This, together with our in-house 3D printers ensures prototypes are aligned with Customer expectations



PRODUCTION

40 000+ GPS units pass through our Test jigs every month supported by the G-Matrix test data base and monthly SLA



"A Good company delivers excellent products and services.
Great companies does all that and strives to make the world
a better place"

Bill Ford - Executive Chairman of *Ford* Motor Company

Our Services

- Electronic Firmware Development in right down to microprocessors
- Low Power Products – Sigfox, LORA, GSM, Low Power Radio, BLE, Solar powered, NB-IoT, RPMA, M-CAT1, MQTT Products.
- Labview Software Development
- Electronic and Mechanical Interfacing.
- Development on "Internet of Things" networks
- Integration on 3rd party Platforms
- Deployment of LPWAN networks
- Intensive research and development in Sigfox, Lora, BLE, Wi-Fi & GSM communication
- Management Systems for remote communication
- Development of smartphone application.

Current Products

RAMAC™

Remote Access Management and Control Systems

- Cold Storage Monitoring
 - Smart Location Button
 - Range Detector
 - Remote Lock Monitor and driver
 - Cable Theft Solution
 - Asset Tracker
 - Temperature Sensor
 - Power State Monitor
 - Tamper Proof Container Locks
 - Intrusion protection Sensors
 - Vibration Sensor
 - Magnetic Sensor
 - Power consumption and Battery monitor
 - Camera Pole Maintenance Monitoring
- RAMAC™ Portal is a ready to use online web-based portal, available to any customer
 - RAMAC™ App allows local device configuration, OTA Firmware updates, diagnostics and real time information of the device
 - RAMAC™ Cerebro is a consumer facing App which can be white labelled for our channel partners
 - RAMAC™ API allows for easy integration



G-Matrix Systems
Integrated System Design

Our IoT Footprint



Remote Access Management and Control Systems

September 01, 2021 10:54:59 WED

Akheel Jame...

Account:

All Accounts

Device Types:

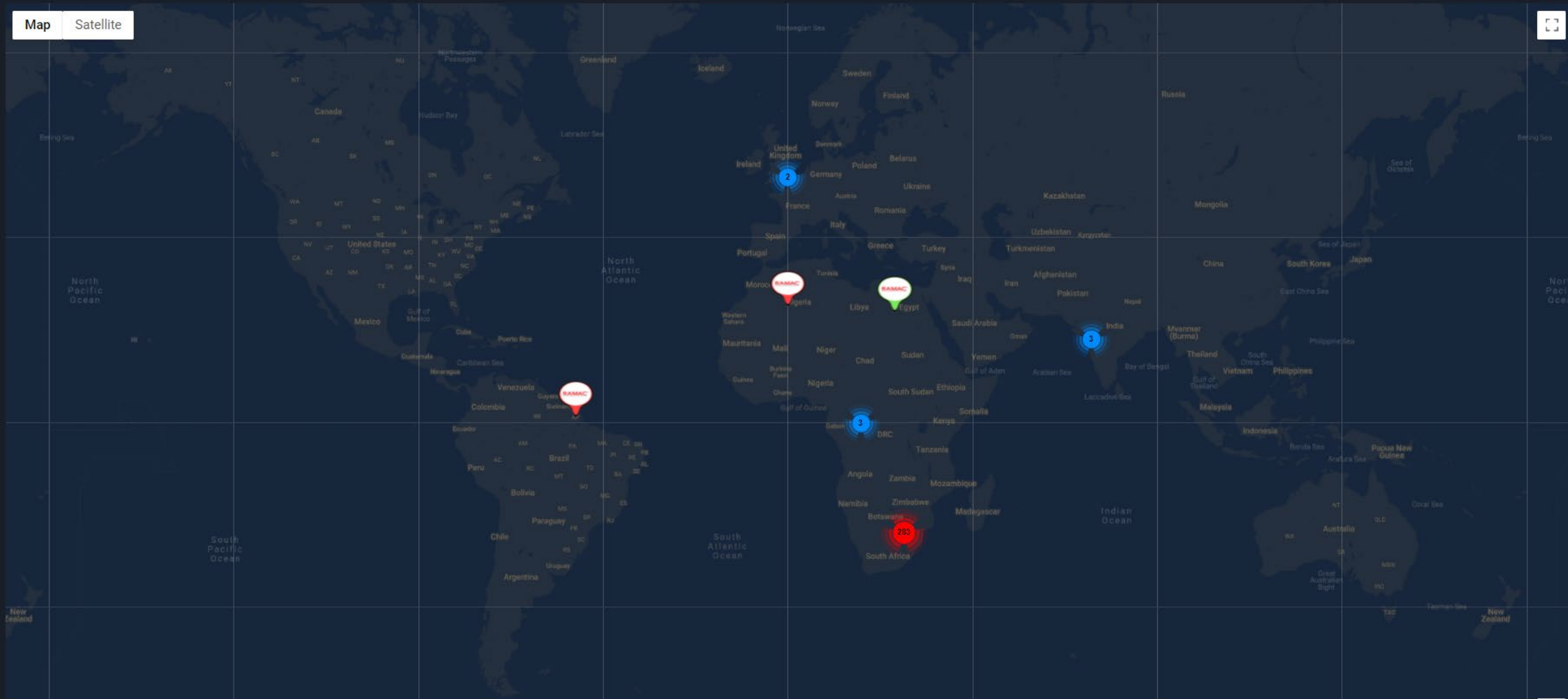
All Device Types

Devices:

All Devices

Total Devices : 433

Map Satellite





Smart Location Button

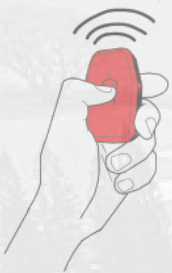
The **Ramac™ Smart Location Button** is an intelligent Smart Button solutions that combines GPS/SigFox and BLE technologies into one. The button can be configured for different functionalities via the mobile app and can be used to provide GPS based Alerts.

Key Benefits

- Low Cost – total cost of ownership
- Low Power- Lasts at least 4 times longer than GSM products
- Offline Logging Capable- for additional points that could not be sent in LPWAN Message
- Small Form Factor- 77x 48x 19mm (45g)
- USB-C Rechargeable
- API and SDK Available

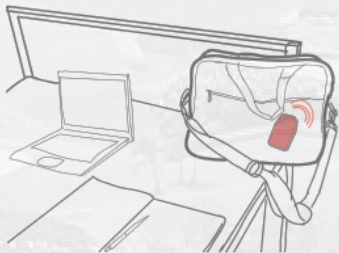


GPS Panic Button
(Help Me)



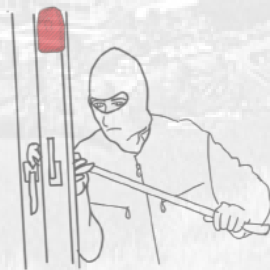
Expected Battery Life
8 Months +
Rechargeable

GPS Tracker with Panic
(Track It)



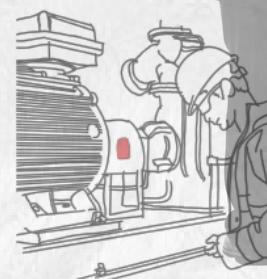
Expected Battery Life
3 Months +
(Sleeps during no movement)
Rechargeable

Motion Activated Alert
(Guard It)



Expected Battery Life
8 Months +
Rechargeable

Vibration Detection
(Monitor It)



Expected Battery Life
8 Months +
Depending on Transmission frequency
Rechargeable





Panic Button (P2)

(Coming Soon)

The **Ramac™ Panic Button** is an intelligent Smart Button solutions that combines GPS & IoT technologies into one. The button can be configured for different functionalities via the mobile app and can be used to provide GPS based Alerts.

Key Benefits

- Low Cost – total cost of ownership
- Low Power- Lasts at least 4 times longer than GSM products (2 weeks on single charge)
- Offline Logging Capable- for additional points that could not be sent in LPWAN Message
- **Small Form Factor- 50 x 40 x 17mm (25g)**
- Wireless Rechargeable battery
- API and SDK Available

Use Cases:

- People Tracking
- Guard Tracking
- Asset Tracking
- Pet Tracking



Matrix Systems
Integrated System Design

* Final product may slightly differ from the above specifications

Personal Safety at the Touch of a button!!!

So many companies have Panic Apps where in the event of an emergency the first thing taken from you is your cellphone

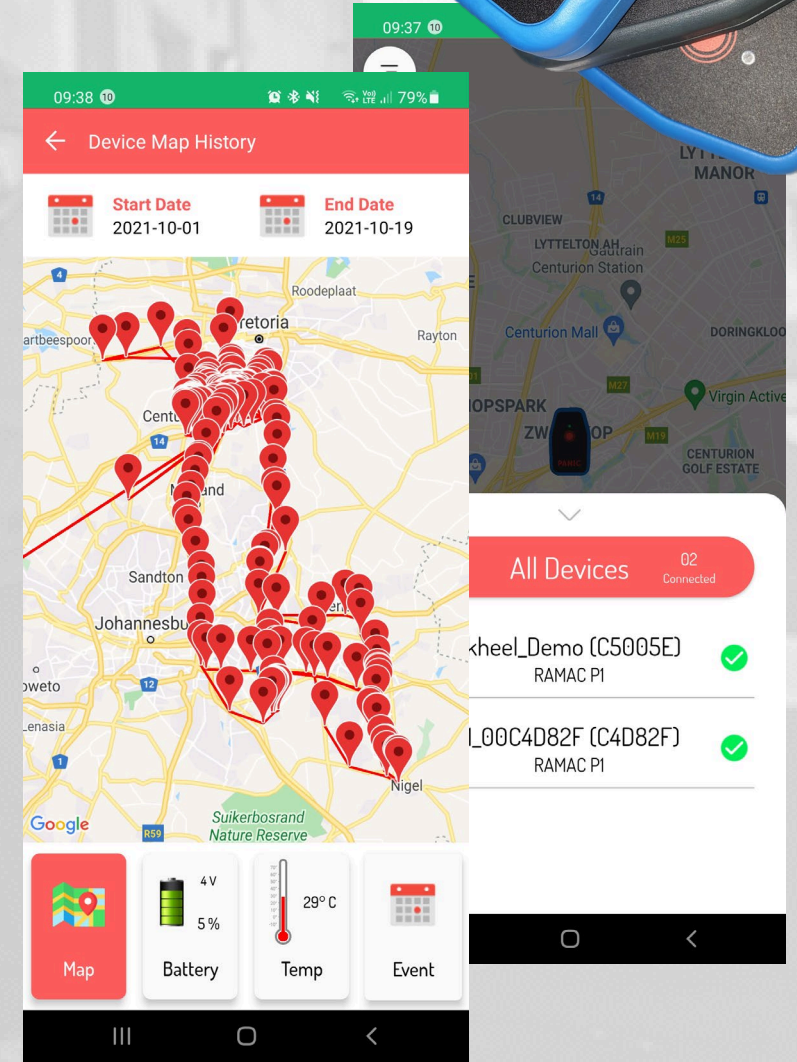
Some have tried getting smarter by using BLE Panic Buttons which once the connection to your phone is lost, it is completely useless.

With the G-Matrix Systems RAMAC Smart Location Button, you won't be left alone!

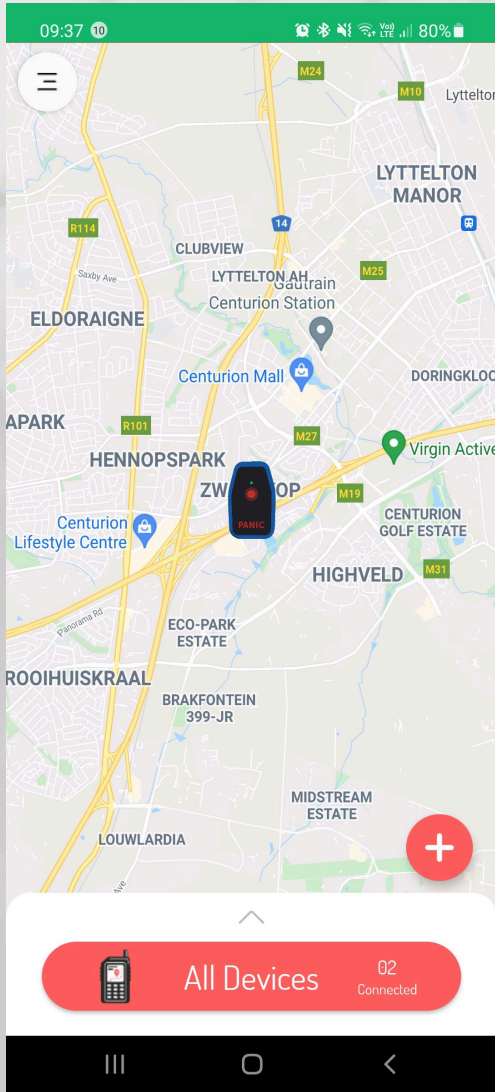
Featuring:

- Independent capability.
- Long battery life
- Small form factor
- Long range communication
- USB-C Rechargeable
- Location Sharing
- Geofencing per unit
- Consumer facing App

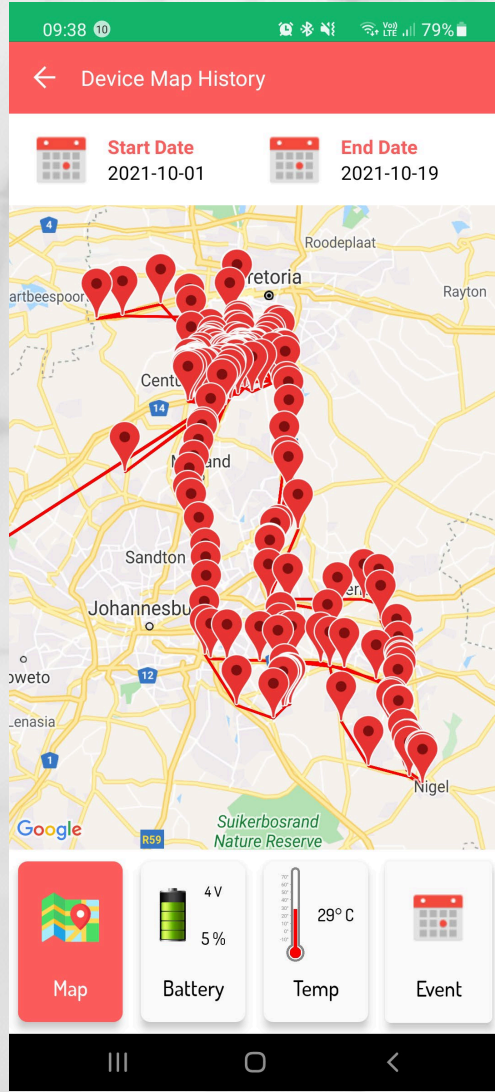
And Offline logging capable for those sporting enthusiasts!!!



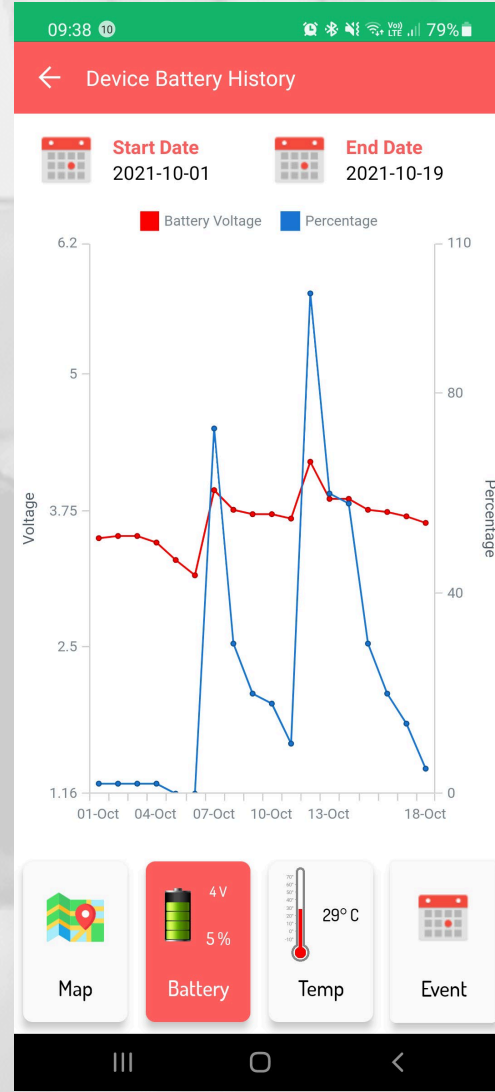
Introducing our brand new Cerebro App!!!



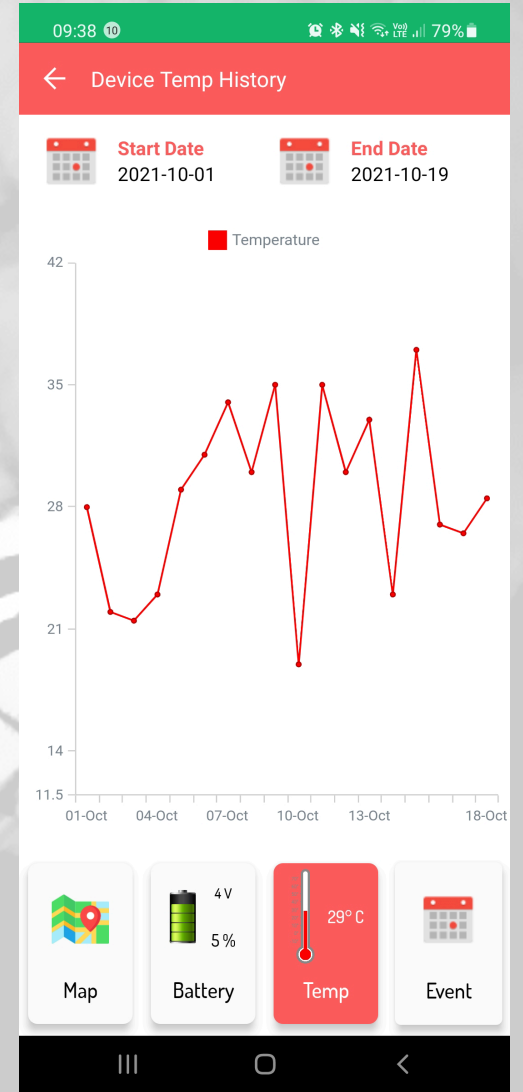
View Live Locations



Historical locations

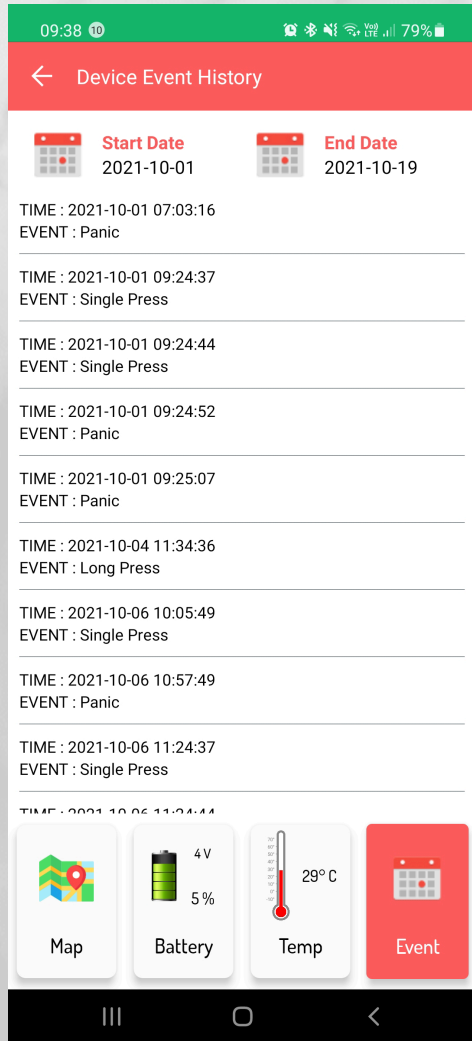


Battery Graph

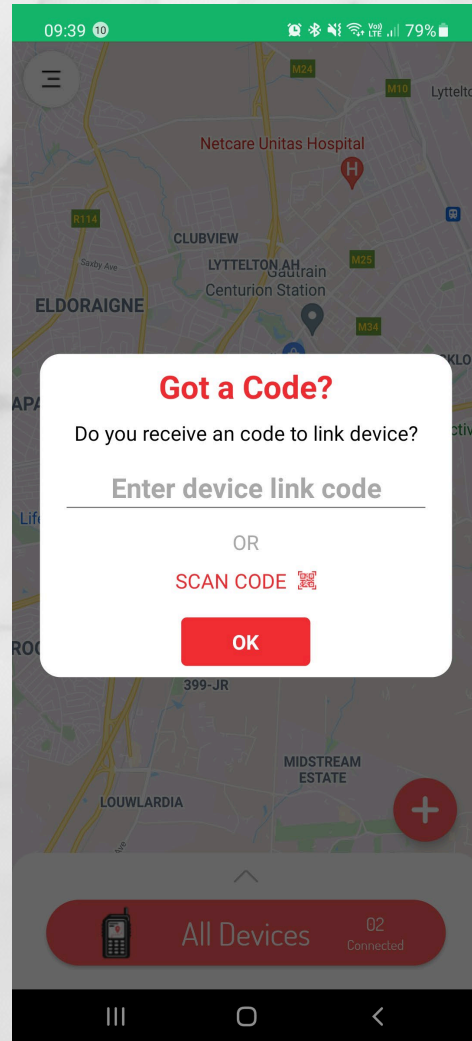


Temperature Graph

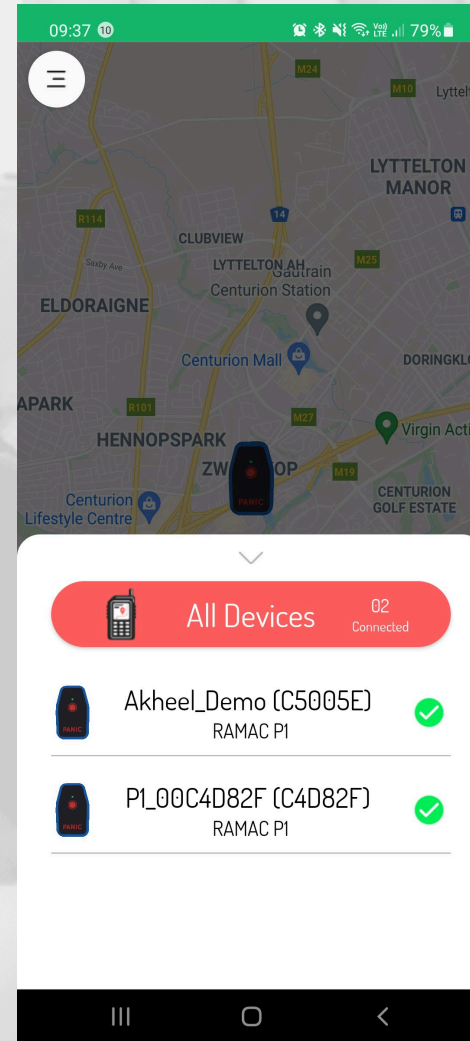
Introducing our brand new Cerebro App



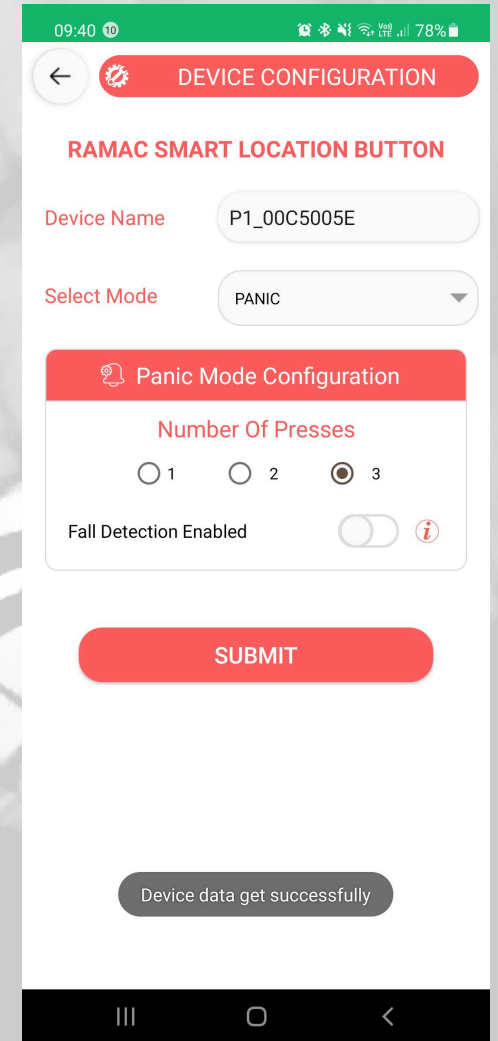
Event history



Device location
Sharing



Geofence per unit



User Defined
Configuration

Pulse Sensor



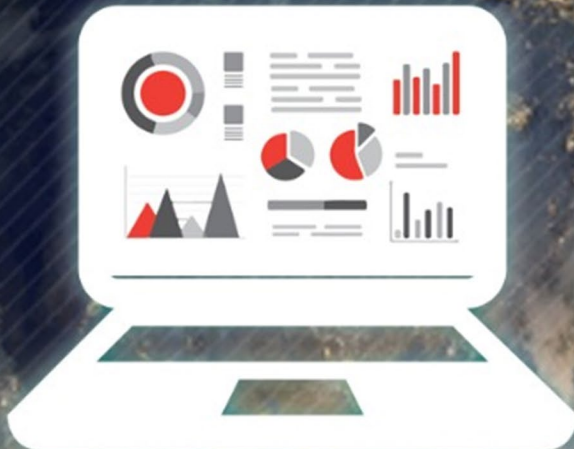
Cable Theft Sensor



Temperature Sensor



RAMAC™ Portal
& Mobile App



RAMAC™
Remote Access Management and Control Systems

Remote Lock Unit



Power State Sensor



Intrusion Protection



Magnet
Sensor



Asset Tracker



Smart Location
Button



Vibration Sensor





G-Matrix Systems

Integrated System Design

G-Matrix Systems addresses the modern need for monitoring through a range of bespoke IOT communications solutions, from cold chain monitoring, to security and entry control, tracking, fluid measurement and more.

G-Matrix Systems is a full turn-key IOT solution provider.

Contact Us

G-Matrix Systems (Pty) Ltd

Building 3 Highgrove Office Park cnr Olievenhoutbosch Str &
Tegel Ave, Highveld Techno Park, Centurion, 0157

info@g-matrixsystems.com

www.g-matrixsystems.com

TEL: +27 87 803 9987

Cell: +27 72 594 8408